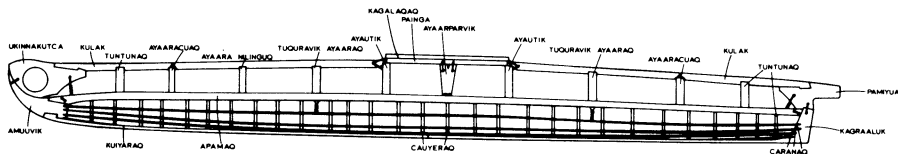
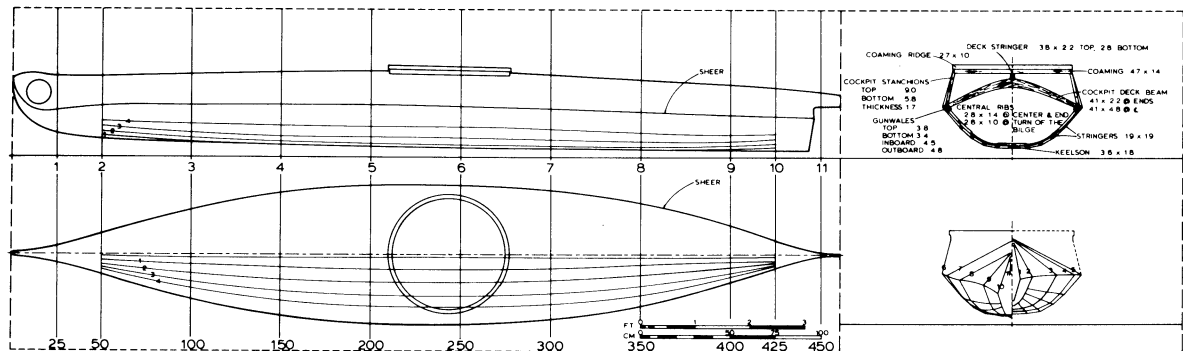


Figure 18. Scale drawing of Hooper Bay kayak



**BERING SEA  
KAYAK**  
NATIONAL MUSEUMS OF  
CANADA - OTTAWA

NMM 61 E 1071  
 LENGTH ..... 15 1/4 ..... 450.7  
 BEAM ..... 30 1/2 ..... 78.0  
 DEPTH TO SHEER ..... 9 4/8 ..... 23.8  
 MADE 1978 BY DICK BUNYAN, HOOPER BAY,  
 ALASKA  
 SCALE 1:8 (IN CENTIMETERS)

**LINES & CONSTRUCTION DETAILS**

SHEET 1 OF 7  
 DAVID W. ZIMMERLY 1977

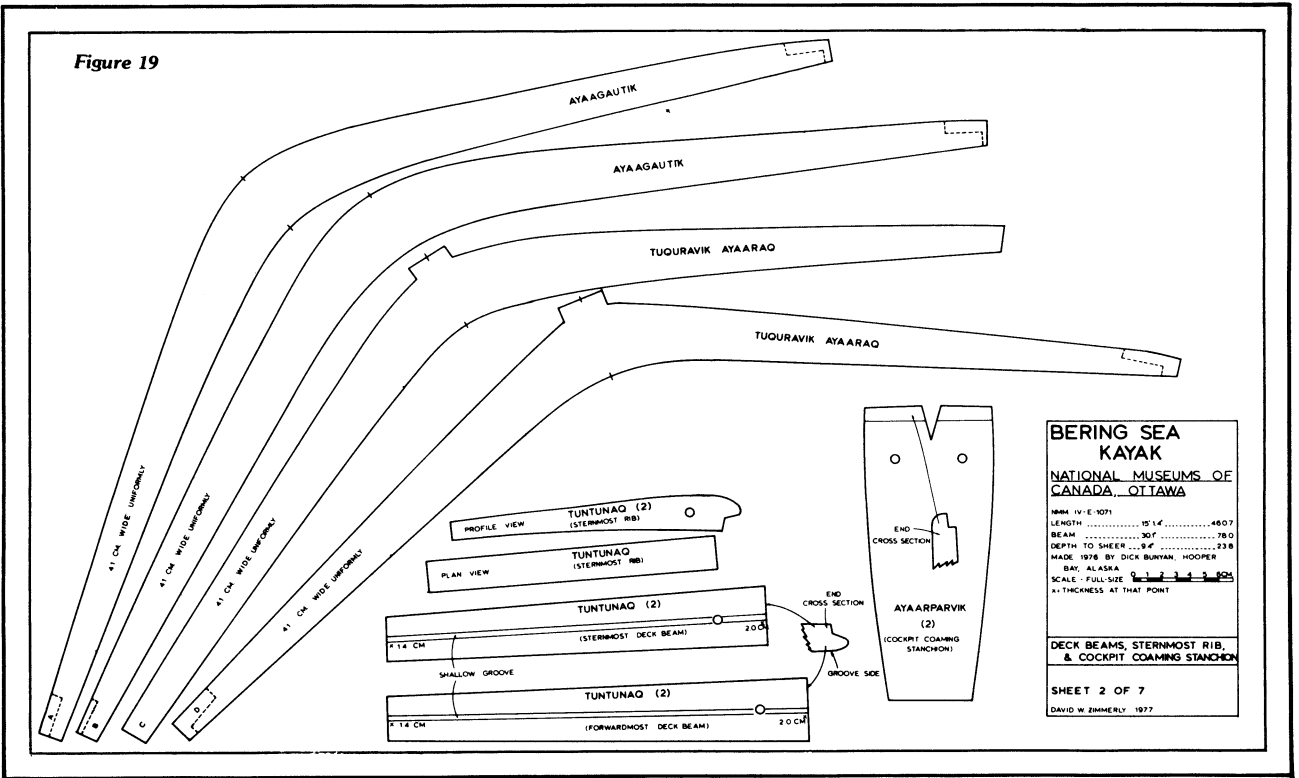


Figure 19-23. Full-size drawing (shown photo-reduced) of Hooper Bay kayak parts

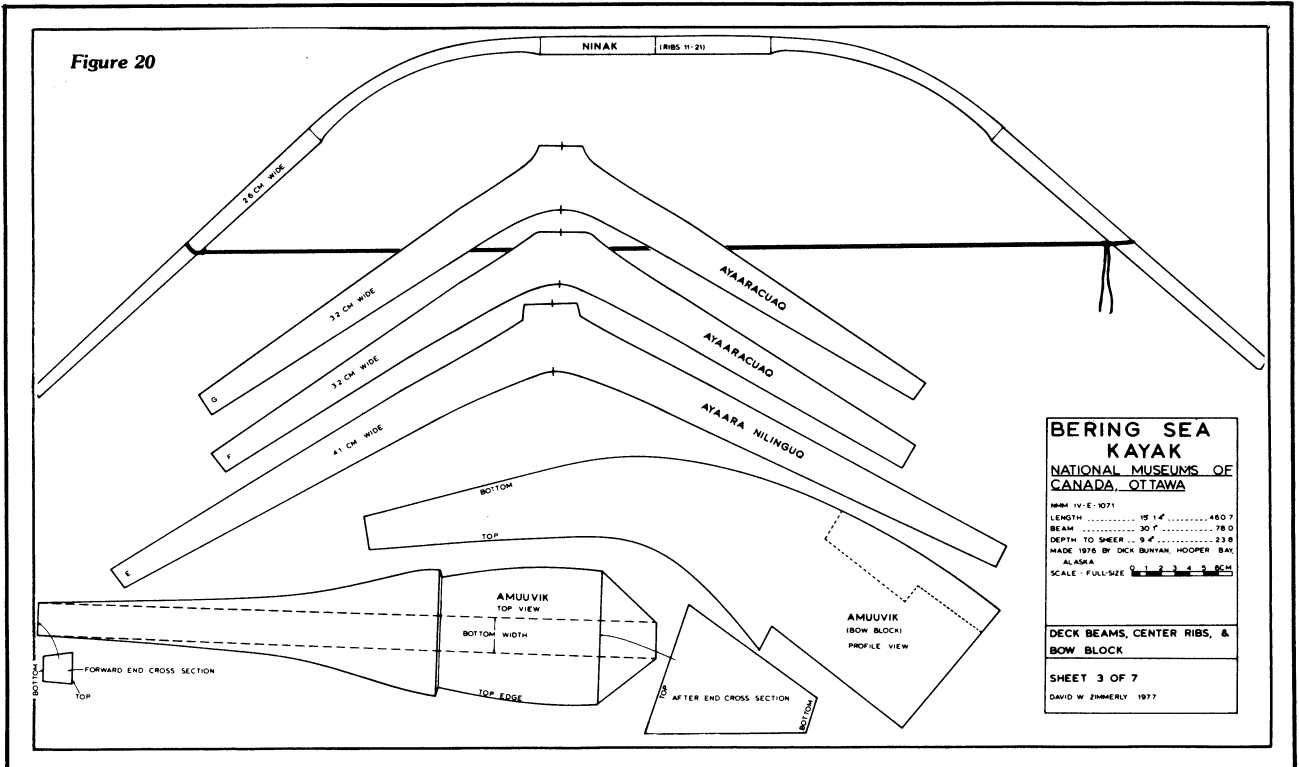


Figure 21

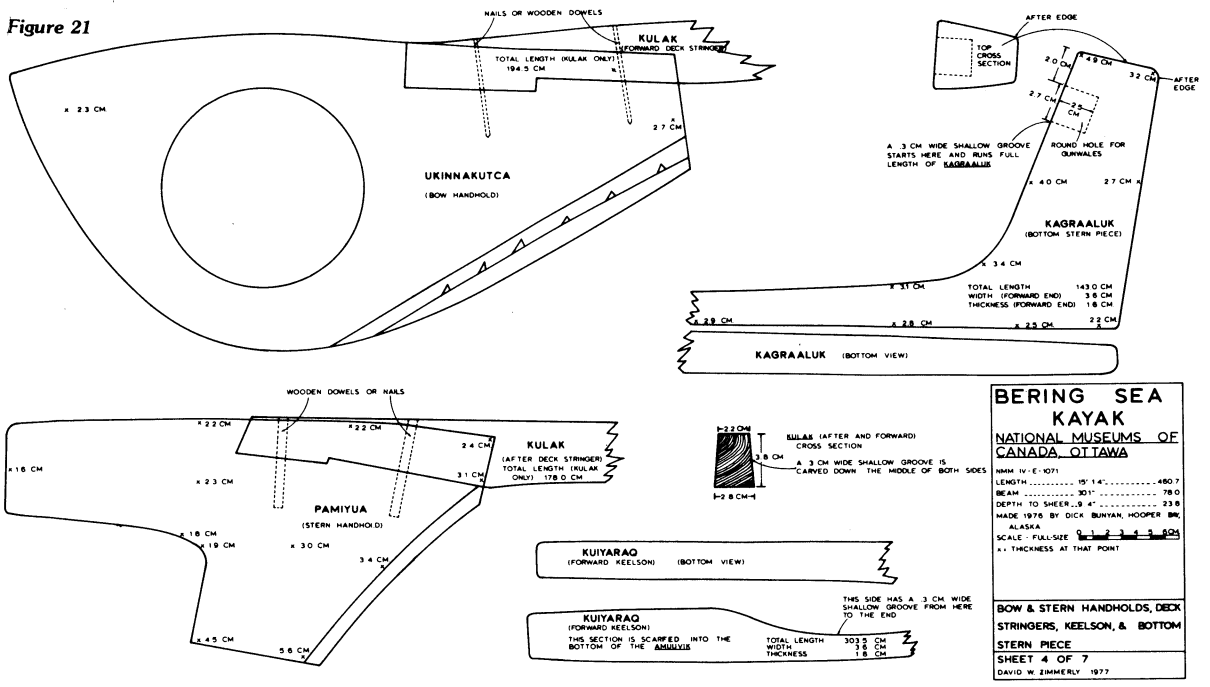


Figure 22

