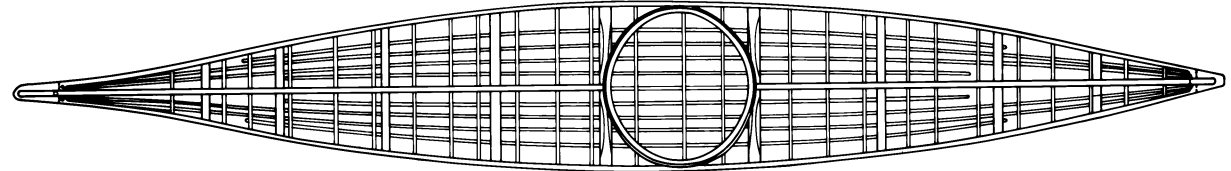
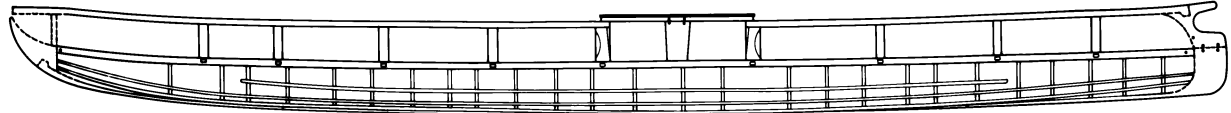


ALL RIBS, STRINGERS, KEELSON AND GUNWALE HAVE A SHALLOW GROOVE (6-7mm WIDE) ON INBOARD SIDE.
 BOW AND STERN CONSTRUCTION BASED ON PHOTOGRAPHS. SCARF JOINTS AND SHAPE OF PIECES MAY NOT BE ACCURATE.
 ----- SEAM

OFFSETS, CENTIMETERS, TO OUTSIDE OF SKIN	STEM	250	300	350	400	450	500	550	600	650	700	750	800	850	900	950	1000
SECTIONS	480	454	450	429	408	391	447	400	310	227	454	464					
SHEER		286	278	256	233	22.8	232	229	230	221	221	250					
CHINE 4				160	123	115	105	100	103	124	14						
CHINE 3				8.2	8.9	7.1	5.5	5.0	4.8	8.8	11	15.1					
CHINE 2				3.2	3.5	3.4	3.1	3.0	2.8	3.1	3.1	3.1	3.1	3.1	3.1	3.1	3.1
CHINE 1				44.5	15.9	10.0	5.4	3.1	1.9	0.0	0.3	0.2	0.3	3.5	3.4	33.4	
KEELSON				0.9	1.2	1.2	1.2	1.2	1.2	1.2	1.2	1.2	1.2	1.2	1.2	1.2	1.2
SHEER				4.0	8.0	18.2	27.2	3.9	35.4	35.4	33.3	28.1	18.2	18.2	18.2	18.2	18.2
CHINE 4				12.6	18.0	21.2	25.4	22.9	23.9	18.8	19.8	19.8	19.8	19.8	19.8	19.8	19.8
CHINE 3				13.6	16.3	17.7	18.5	16.8	14.8	13.4	4.4						
CHINE 2				6.7	9.6	11.0	12.0	12.5	11.8	10.1	6.8	3.3					
CHINE 1				5.3	5.5	5.2	5.8	5.5	5.6								
KEELSON	0.8	0.8	1.2	1.4	1.4	1.4	1.4	1.4	1.4	1.4	1.4	1.4	1.2	1.2			



**NORTON SOUND
 KAYAK
 LOWIE MUSEUM, UNIVERSITY
 OF CALIFORNIA, BERKELEY**

L.M. 2-1574
 LENGTH 171.8" 522.7 cm
 BEAM 28.3" 71.8 cm
 DEPTH TO SHEER 15.7 40.0 cm
 WEIGHT 89.1 lbs 40.4 kg
 PROBABLY COLLECTED BY CHARLES L. HALL,
 CIRCA 1895, MOUTH OF YUKON RIVER
 SCALE 1:8 (CENTIMETERS)
 LWL (LOAD WATERLINE) BASED ON 88.0 kg
 (190 lb) MAN SEATED 2860 cm FROM BOW)
 CP (PRISMATIC COEFFICIENT) .57
 DISPLACEMENT TO SHEER 756.0 lbs 342.9 kg
 THEORETICAL TOP SPEED 4.8 KNOTS
 LOADED KAYAK UNSTABLE AT 45° HEEL

LINE AND CONSTRUCTION DETAILS

SHEET 1 OF 1
 LINES TAKEN OFF BY DAVID W. ZIMMERLY,
 DECEMBER 1988
 DRAWN BY KATHRYN P. IRELAND, 1982