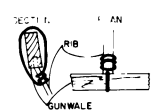
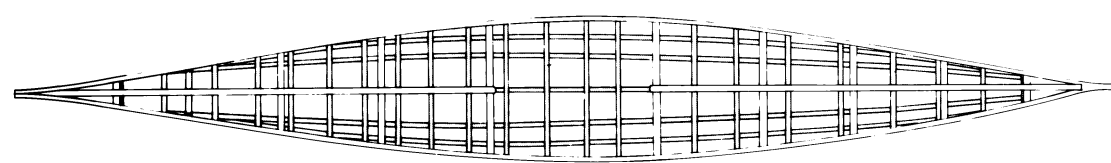
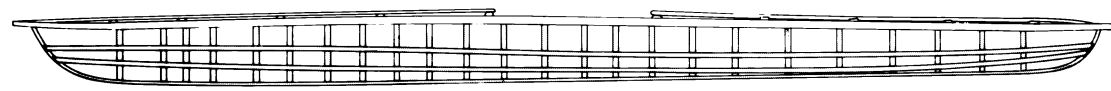


DISTANCE FROM BLADE END	5	10	20	30	40	50	60	70	80	90	100	140	150	160	167
HALF BREADTHS	32	39	45	48	50	50	46	40	16	15	16	13	12	42	40
THICKNESS	14	17	18	18	20	22	24	25	34	44	49	46	46	34	28

OFFSETS - CENTIMETERS TO OUTSIDE OF SKIN

STATION	STEM	20	30	40	50	60	70	80	90	100	140	150	160	167	TWIK
KEELSON	107	98	85	70	67	50	29	20	20	20	30	30	30	30	30
CHINE 1	160	143	129	107	108	98	99	99	103	103	103	103	103	103	103
CHINE 2	214	208	206	205	186	166	159	156	158	135					
GUNWALE	24	29	36	41	51	53	44	25	27	27	27	27	27	27	27
SHEER	47	42	33	34	34	34	32	14	30	27	29				
DECKRIDGE	335	332	342	357	370	378			315	317	276	301	290		
KEELSON	00	00	00	00	00	00	00	00	00	00	00	00	00	00	00
CHINE 1	25	0	10	8	14	14	13	15	12	10	8	6	7		
CHINE 2	49	7	14	10	20	23	24	25	17	10	5	7			
GUNWALE															
SHEER	3	8	7	6	13	24	25	32	27	21	13	2	6		
DECKRIDGE	00	00	00	00	00	00	00	00	00	00	00	00	00	00	00

THIS KAYAK WAS COLLECTED BY A.E. NORDENSKJÖLD WHILE ONBOARD THE FROZEN IN VEGA IN THE WINTER OF 1878-79 ON THE NORTH COAST OF CHUKOTKA, SIBERIA. THIS IS THE ONLY ARCTIC KAYAK WITHOUT A DOGMAKING SHOWN. THE "COCKPIT" RESEARCH TO DATE HAS NOT MALE A CLEAR HOW AND FOR WHAT THIS KAYAK WAS USED. ACCORDING TO NORDENSKJÖLD THE KAYAK IS CALLED ANAT'KUA'AT IN CHUKCHI WHILE THE PADDLE IS LABELED URKA'IBU' (AT NO 1884.4.96). IT IS NOT CLEAR WHETHER THIS RAFFLE IS FOR THE KAYAK OR FOR THE OPEN SKIN BOAT AT'KUA'AT.



MARITIME CHUKCHI KAYAK
ETHNOGRAPHIC MUSEUM OF SWEDEN, STOCKHOLM

EMS 1880.4.1255

LENGTH	462.7	15 22"
BEAM	32.9	24 1/2"
DEPTH TO SHEER	26.3	10 1/2"
WEIGHT (cupron)	150 kg	331 lbs
SCALE	1:8 (CENTIMETERS)	
L.W.L. (LOAD WATER LINE) BASED ON 68 kg		
MAN SEATED 230 cm FROM BOW		
DISPLACEMENT TO SHEER	316.7 kg	698.1 lbs
C.P.	.51	
THEORETICAL TOP SPEED	4.6 KNOTS	
LOADED KAYAK UNSTABLE AT 70° HEEL		

LINES AND CONSTRUCTION DETAILS
SHEET 1 OF 1
LINES TAKEN OFF BY DAVID W. ZIMMERLY
OCTOBER, 1975
DRAFTED BY D.M. MCCLINTON, 1981