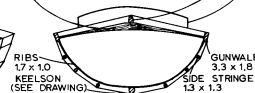
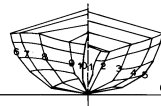


SECTIONS 4 TO 9 ARE RECONSTRUCTED

COCKPIT COAMING 2.5 x 3.0  
DECK STRINGER (SEE DRAWING)  
DECK BEAM (SEE DRAWING)



		PADDLE OFFSETS																	
		1	5	10	20	30	40	50	60	70	80	90	100	110	120	130	140	149	159
DISTANCE FROM HANDLE END	HALF BREADTHS	3.2	1.3	1.1	1.5	1.1	1.5	1.3	1.4	1.6	1.5	1.4	1.3	1.2	1.1	1.0	1.1	1.8	0.0
1b161A	THICKNESS	2.9	2.9	2.8	3.0	3.0	3.0	3.0	2.5	1.9	1.1	1.1	1.0	1.0	1.0	1.0	1.0	1.0	1.0
1b161B	HALF BREADTHS	3.1	1.2	1.4	1.4	1.5	1.5	1.5	1.5	1.5	1.5	1.5	1.5	1.5	1.5	1.5	1.5	1.5	1.5

KAYAK CONDITION IS POOR. BOTH FORE AND COCKPIT DECK BEAMS ARE CRACKED THROUGH AND MOST RIBS FROM 150 CM TO ABOUT 375-400 CM FROM THE STEM ARE BROKEN. RIBS HAVE AN OVAL CROSS SECTION WHILE THE STRINGERS ARE ROUND. RIBS ARE OF SPRUCE WHILE LASHINGS ARE SPLIT SPRUCE ROOT. ALL SEAMS HAVE DYED WOOL AND SEA MAMMAL WHISKER DECORATIONS. DECK BEAMS ARE MORTISED ALL THE WAY THROUGH THE GUNWALE. COAMING RIM IS LASHED ONTO COAMING ABOUT EVERY 10.5 CM. HULL APPEARS TO HAVE BEEN PAINTED WITH RED OCHER BANDS AS SEEN IN DRAWING.

FORWARD DECK STRINGER



REAR DECK STRINGER



COCKPIT DECK BEAM



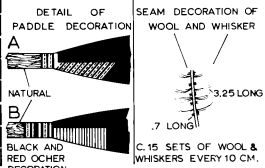
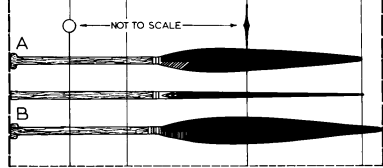
COAMING STANCHION  
OUTBOARD VIEW



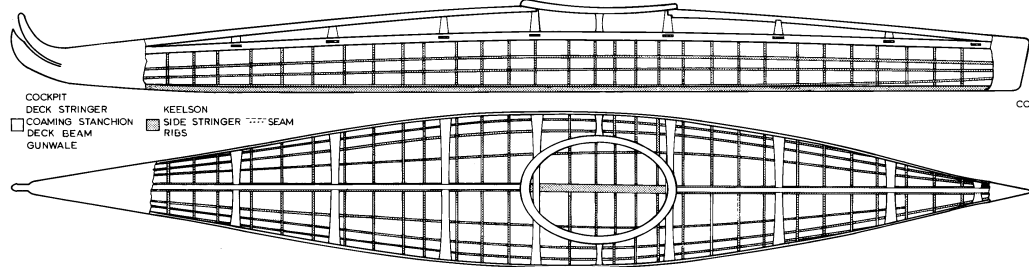
SIDE VIEW

OUTBOARD SURFACE

FADED RED-PAINTED SECTIONS



		OFFSETS - CENTIMETERS TO OUTSIDE OF SKIN										
		1	5	10	15	20	25	30	35	40	42.5	STERN
HEIGHTS ABOVE BASELINE	DECKRIDGE	19.720	32.6	131.0	34.5	35.5	33.3	29.0	25.0	23.0		
	SHEER	17.9	17.4	21.0	3.5	25.0	25.3	23.3	21.1	20.1	20.2	
	GUNWALE	21.2	20.7	24.3	1.9	21.0	22.1	20.2	18.4	18.4	18.4	
	CHINE 1			10.2	12.2	13.7	11.5	31.5	21.4	11.1	9.5	
	CHINE 2			5.3	6.5	7.8	9.1	9.9	9.8	8.0		
	CHINE 3			2.9	2.4	2.4	4.5	3.7	4.6			
	KEELSON	22.0	3.7	8.1	0.0	0.0	0.0	0.0	0.0	0.0	0.0	
	SHEER	5.7	9.2	18.1	12.7	13.2	13.2	12.8	12.0	3.7	5.1	
	GUNWALE	17.6	26.2	23.0	9.31	7.27	9.19	7.7	7.2			
	CHINE 1	13.9	22.6	27.9	22.9	22.5	17.7	6.5				
CHINE 2	10.7	18.3	24.0	24.3	21.8	14.4	5.5					
CHINE 3	10.8	14.1	11.5	21.5	31.0	2.7						



# KODIAK KAYAK

## DANISH NATIONAL MUSEUM, COPENHAGEN

DNM 1b 160  
LENGTH 14' 2.9" 434.0  
BEAM 25.9" 65.6  
DEPTH TO SHEER 25.5  
WEIGHT (ESTIMATED) 40.1 lbs 20.0 kg  
COLLECTED BY HEINRICH J. HOLMBERG, 1851, KODIAK ISLAND, ALASKA.  
SCALE 1:8 (IN CENTIMETERS)  
LWL (LOAD WATERLINE) BASED ON 68 kg (150 lb) MAN SEATED 240 CM FROM BOW WITH ESTIMATED KAYAK WEIGHT OF 20 kg  
CP (PRISMATIC COEFFICIENT) .85  
THEORETICAL TOP SPEED 4.6 knots  
DISPLACEMENT TO SHEER 615.9 lbs 279.4 kg  
LOADED KAYAK IS UNSTABLE AT 56 DEGREES HEEL.

### LINES AND CONSTRUCTION DETAILS

SHEET 1 OF 1  
LINES TAKEN OFF BY DAVID W. ZIMMERLY  
OCTOBER 1975  
DRAWN BY CHERYL SKEAN, 1977.