

SECTIONS	5	25	50	75	100	150	175	200	225	250	256
HALF BREADTH	7.6	8.8	7.9	6.0	2.9	2.6	9.7	8.4	5.0	0.5	
THICKNESS	1.2	1.7	2.3	3.0	4.2	4.1	2.8	2.0	1.6	1.0	0.6

■ RED
■ BLACK

THIS TYPICALLY ALEUT PADDLE IS USNM 78281 FROM UNALASKA, ALEUTIAN ISLANDS, IN THE COLLECTIONS OF THE SMITHSONIAN INSTITUTION IN WASHINGTON D.C.

TUFTS OF HAIR OR WHISKERS WERE SEWN INTO PARTS OF THE BOW AND DECK LONGITUDINAL SEAMS FOR DECORATION.

FRAME IS PAINTED RED.

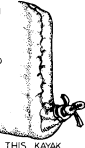
DOTTED LINES IN BOW AND STERN OF CONSTRUCTION DRAWINGS INDICATE PROBABLE CONSTRUCTION.

SEA OTTER CARVED ON STANCHION, 1210 cm FROM BOW.

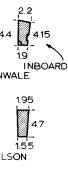
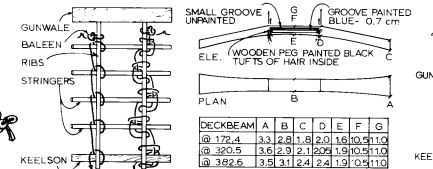
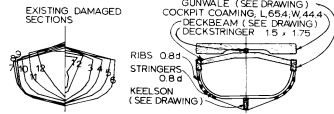
THING ON STERN SKIN EXTENSION WAS UNTIED ON THE BEACH FOR WATER TO DRAIN OUT.

RIB STRINGER TIE DRAWING SHOWS.

BOTH METHODS USED. THE DOUBLE TIE WAS USED MORE OFTEN ON THIS KAYAK.



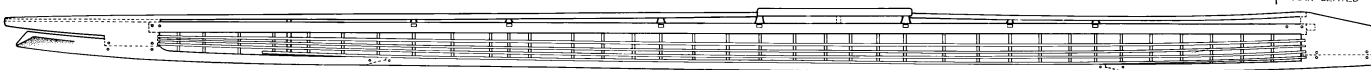
		OFFSETS - CENTIMETERS TO OUTSIDE OF SKIN														
SECTIONS		STEM	25	50	100	150	200	250	300	350	400	450	500	550	575	STERN
DECKRIDGE	24.5	25.0	25.5	26.3	26.5	26.8	27.3	28.0	30.0	27.7	27.1	27.0	26.8	24.4	24.0	
GUNWALE	23.5	27.9	23.5	23.5	23.5	23.5	23.8	27.1	23.5	23.5	23.8	23.5	23.8	24.4	24.0	
CHINE	4	18.5		18.2	16.7	16.0	15.5	15.5	15.2	15.0	15.2	15.1	15.2			
CHINE	3	17.5		18.5	14.0	13.2	12.4	12.4	12.2	12.0	12.1	12.5	12.0			
CHINE	2	11.0	8.4	12.8	12.0	11.0	10.3	10.0	9.9	9.8	10.0	10.3	12.0			
CHINE	1				10.0	8.7	8.2	8.3	7.8	7.6	7.6	8.0	9.5			
KEELSON	20.0	15.0	8.3	6.0	5.0	4.5	4.0	3.6	3.5	3.4	3.3	3.2	4.5	5.0	7.3	
DECKRIDGE	0.8	0.8	0.8	0.8	0.8	0.8	0.8	0.8	0.8	0.8	0.8	0.8	0.8	0.8	1.3	1.3
GUNWALE	1.4	4.7	7.2	11.0	15.5	18.8	21.2	22.1	21.5	20.5	18.5	15.8	12.0			
CHINE	4	0.5	1.1	9.9	14.1	18.2	20.6	21.2	20.2	19.2	17.6	14.3	10.9			
CHINE	3		1.1	8.5	13.2	17.1	19.6	19.9	19.0	18.0	15.8	13.3	9.9			
CHINE	2		0.5	0.7	6.7	11.8	15.2	17.3	17.7	17.0	15.7	14.7	11.1	8.4		
CHINE	1				8.2	11.5	13.6	14.5	14.2	13.0	11.9	8.5	6.6			
KEELSON					0.8	0.8	0.8	0.8	0.8	0.8	0.8	0.8	0.8	1.3	1.3	



ALEUT KAYAK

MUSEUM OF ANTHROPOLOGY AND ETHNOGRAPHY, USSR LENINGRAD

MAE 593-76		
LENGTH	19'09"	591.4
BEAM	17.1"	43.4
DEPTH TO SHEER	8.3"	21.2
WEIGHT (approx.)	44.1 lbs	20.0 kg
DISPLACEMENT TO SHEER	5870 lbs	266.3 kg
CP (PRISMATIC COEFFICIENT)		6.2
THEORETICAL TOP SPEED (KNOTS)		5.3
LOADED KAYAK UNSTABLE AT 17° HEEL		
LWL (LOAD WATERLINE) BASED ON 68 kg (150 lb)		
MAN SEATED 355.0 cm FROM THE BOW		
SCALE (cm)		1:8



COLLECTED BY I.G. VOZNESENSKI 1845, AKUN ISLAND, ALEUTIAN ISLANDS

LINES AND CONSTRUCTION DETAILS

SHEET 1 OF 1
LINES TAKEN OFF BY DAVID W. ZIMMERLY OCTOBER, 1975
DRAWN BY KATHRYN P. IRELAND 1982